

PRISMA Promoting Rural Income through
Support for Markets in Agriculture

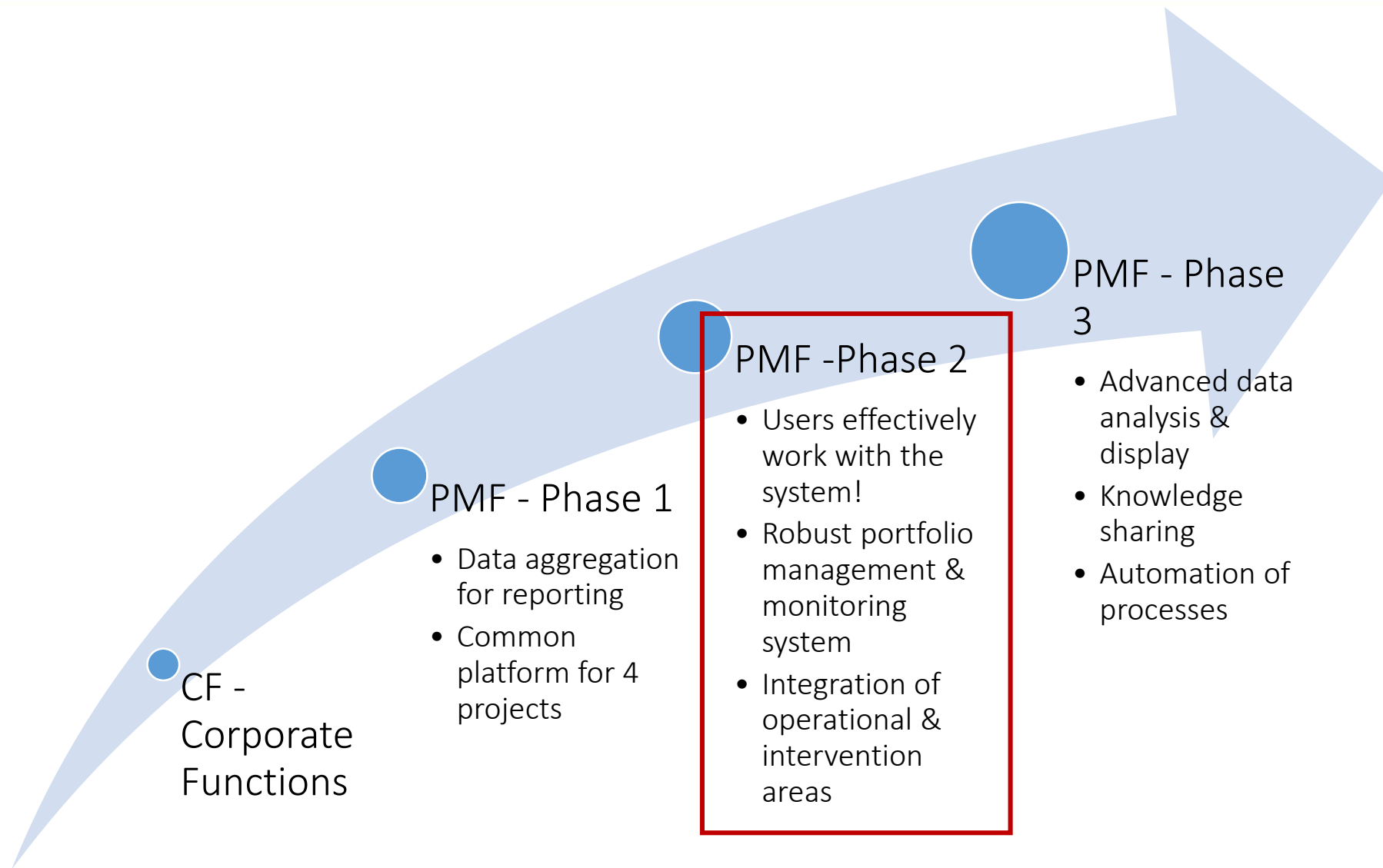


Australian Government
Department of Foreign Affairs and Trade

MIS Soft Launching

January 23, 2017

MIS Vision



PMF - Phase 1 (up to Sep 2016)

→ Focus: aggregating numbers across the projects in a structured database (e.g. DFAT, MTR)

e-ISD (MS Access-based)

- Form
- Data migration (intervention)
- Checking for data and information → accuracy

Reports

- Export to Excel tables → KPIs, ADRs, VfMs

Power BI

- Data aggregation
- Graphs

PMF – Phase 2 (up to Jul 2017)

→ Focus: Emphasizing on the use of data for daily management & strategic decision making (check by SRP visits: Feb & Jul 2017)

Corporate Functions [CF]

- TIRTA-PRISMA integration system
- Advanced financial reporting (Budget vs Actual; running vs posted actual; whole of life budget) to the whole team (budget holders)
- Analysis of personnel costs, travel costs per intervention

Project Management Functions [PMF]

- Finalizing & migrating to Portfolio Management Tool (e-ISD & QMT) using MS Access
- User-friendly display of intervention-related data (incl. costs) using Power BI
- Document Centre with advanced search function using SharePoint
- User training on the new applications
- Request: Portfolio Planner for TIRTA

Others

- Website connected to database of numbers / results
- User-friendly display of admin-related data (incl. costs) using Power BI

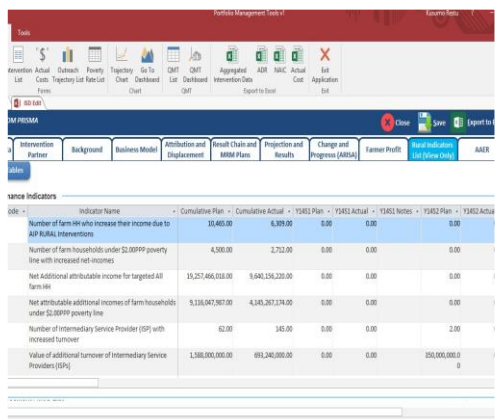
PMF - Phase 3 (up to Dec 2018)

→ Focus: refining the applications and developing new features

- Technical documentation using Wiki
- Integration of CAPI (Computer-Assisted Personal Interview) for survey (MRM)
- Interactive map of commodities and locations
- Re-design of CGMS (Contract and Grant Management System)
- Natural query language (OLAP Cube)

Improvements since the last UAT

Display:



Indicator Name	Cumulative Plan	Cumulative Actual	Y1401 Actual	Y1402 Actual	Y1403 Actual	Y1404 Actual	Y1405 Actual	Y1406 Actual
Number of farm SEs who increase their income due to AIP M&AL Interventions	30,460.00	6,309.00	0.00	0.00	0.00	0.00	0.00	0.00
Number of farm households under \$2,000 PPP poverty line with increased net incomes	4,500.00	2,712.00	0.00	0.00	0.00	0.00	0.00	0.00
Net additional attributable income for targeted All farm SEs	19,257,466,038.00	9,940,156,200.00	0.00	0.00	0.00	0.00	0.00	0.00
Net attributable additional incomes of farm households under \$2,000 PPP poverty line	9,138,047,987.00	4,145,267,274.00	0.00	0.00	0.00	0.00	0.00	0.00
Number of intermediary Service Provider (SP) with increased turnover	62.00	140.00	0.00	0.00	0.00	0.00	2.00	0.00
Value of additional turnover of intermediary Service Providers (ISPs)	1,588,000,000.00	693,240,000.00	0.00	0.00	0.00	0.00	250,000,000.00	0.00

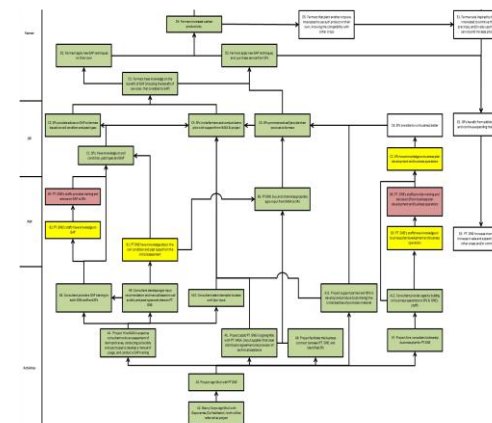
- A new tab displaying Key indicators
- Automatic display of districts with possible overlaps

Data storage:



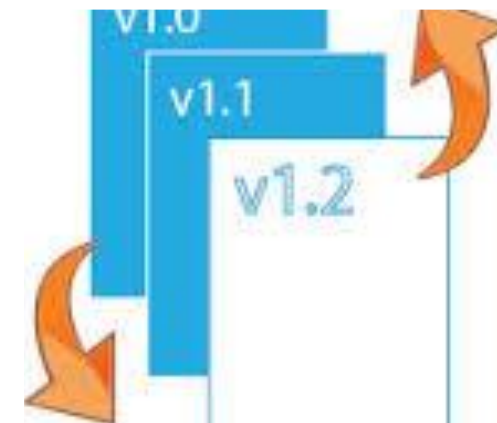
- Simpler Partner classification
- Multiple institutions in 1 contract
- Special tag for Impact Assessment Survey

Results Chain & MRM Plan:



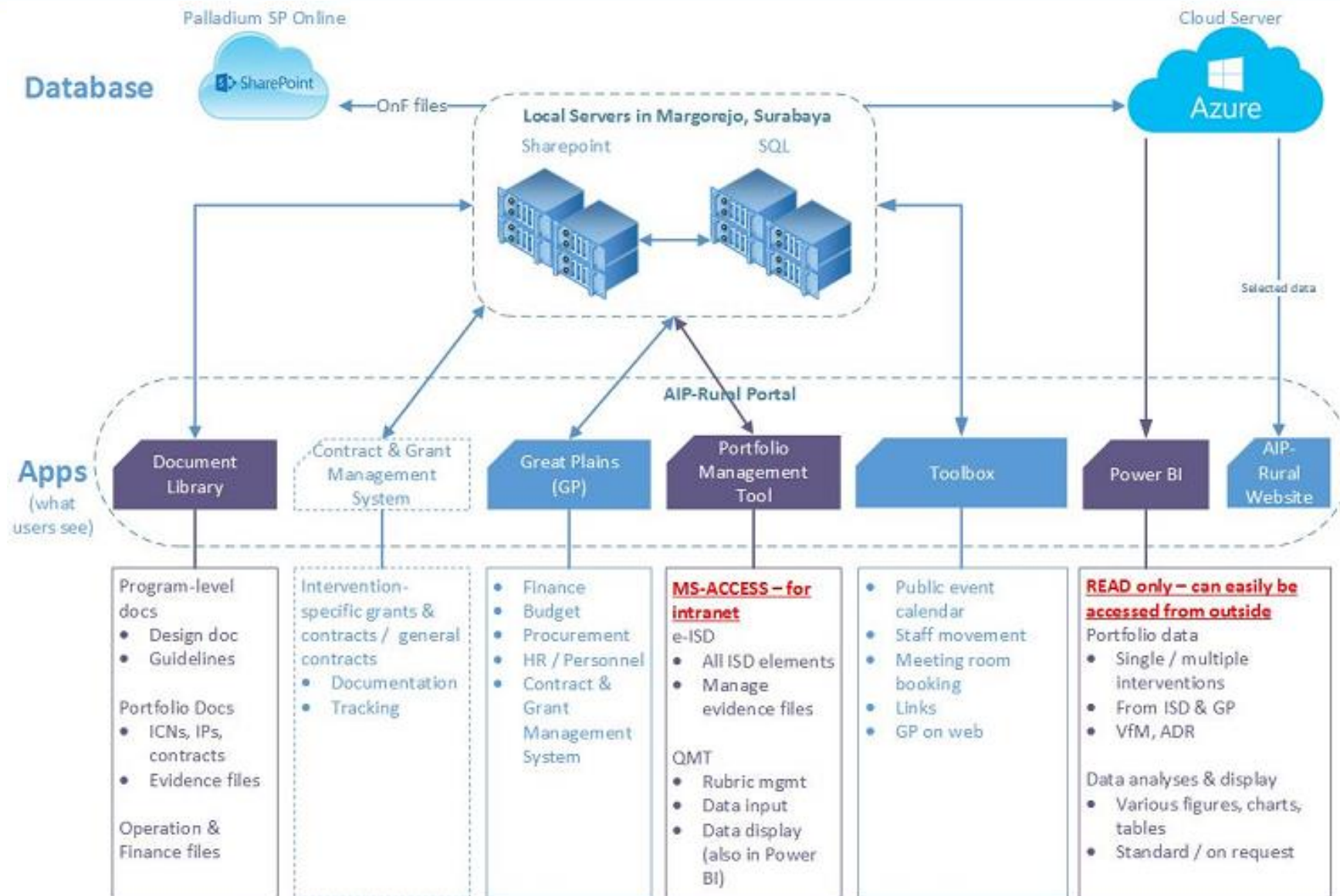
- Drop down options on the PIC column
- Addition of “Sustainability” group
- Status codes for each RC box

Version Control



- Log
- Data snapshot/retrieval per edit date

MIS Architecture



Document Center – 5 Key Features

Google-like search

- Deep down to the content



Customizable view

- 01 DELIVERABLES
- 02 CMT MEETING
- 03 GUIDELINES AND MANUALS
- MONTHLY DFAT UPDATES
- PROMARK
- PRESENTATIONS
- JOINT DOCUMENTS

Versioning



Dropbox-like sync



Check in – Check out



Project Management Tools – 5 Key Features



Instant roll-out of new ISD versions



Information stored in structured database

- Easy to retrieve important figures



Easier Quality Assurance process

- Validation rules
- Completeness check



Version control

- Log
- Lock
- Snapshot



Systematic storage of evidence files

Power BI – 5 Key Features

